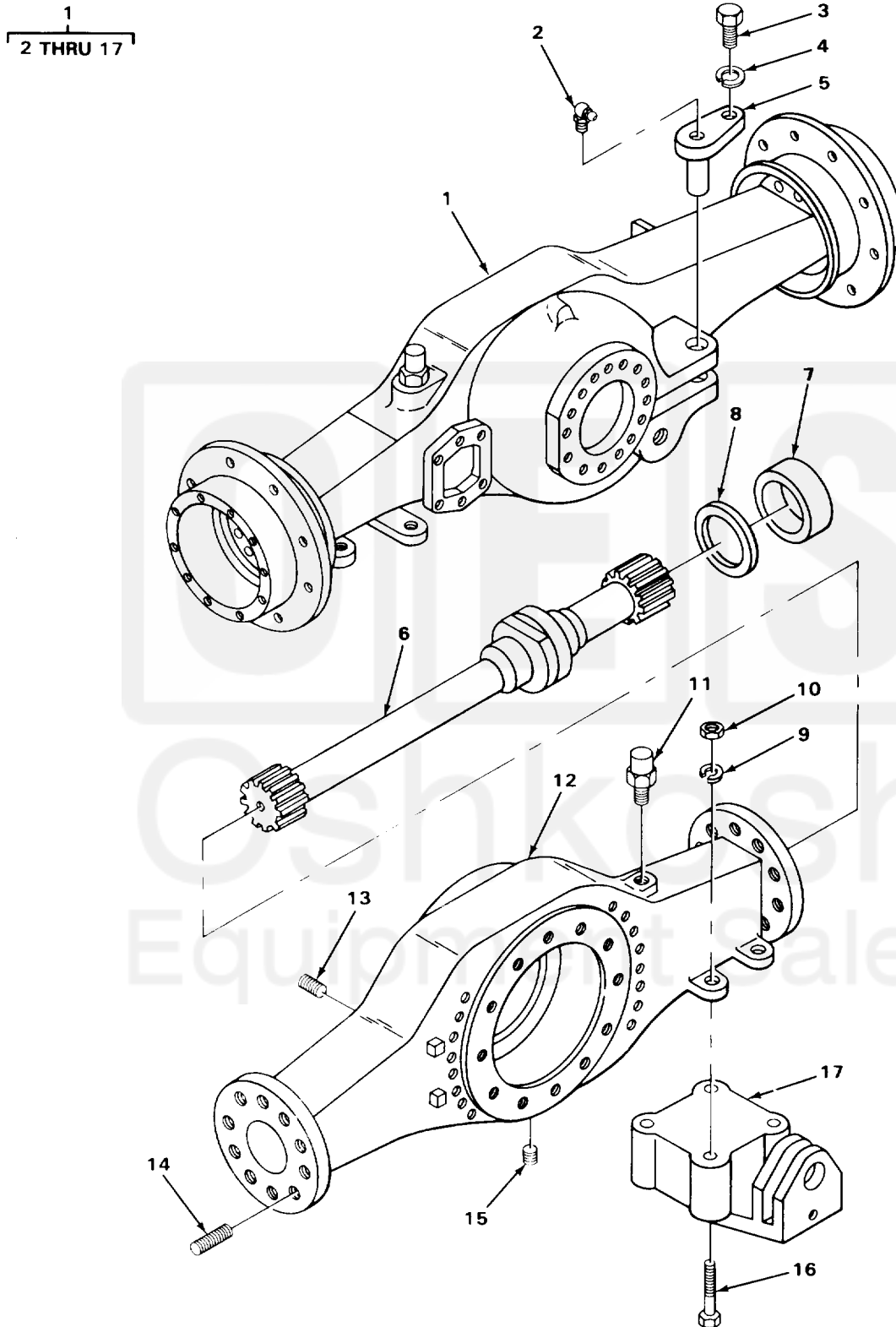


SECTION II

TM 10-3930-242-24P



TA705422

FIGURE 96. FRONT AXLE, HOUSING, AND ATTACHING PARTS.

(1) ITEM NO	(2) SMR CODE	(3) CAGEC	(4) PART NUMBER	(5) DESCRIPTION AND USABLE ON CODES (UOC) GROUP 10 FRONT AXLW GROUP 1000 FRONT AXLE ASSEMBLY FIG. 96 FRONT AXLE, HOUSING, AND ATTACHING PARTS	(6) QTY
1	PAFHD	12603	131833	AXLE ASSEMBLY,VEHIC FRONT DRIVE	1
2	PFOZZ	96906	MS15003-4	.FITTING,LUBRICATION AXLE	1
3	PPFZZ	96906	MS90728-11	.SCREW,CAP,HEXAGON H OSCILLATING CYLINDER PIN MTG	1
4	PAFZZ	96906	MS35338-046	.WASHER,LOCK OSCILLATING CYLINDER PIN MTG	1
5	PAFZZ	03677	LT1-593	.PIN ASSEMBLY STEERING CYLINDER MTG	1
6	PAHZZ	03504	110042	.SHAFT ASSEMBLY, AXLE LH	1
6	PAHZZ	95019	61210	.AXLE SHAFT AND JOIN JOINT,RH	1
7	PAHZZ	01212	410867S61	.SEAL,PLAIN ENCASED AXLE SHAFT	4
8	PAHZZ	03504	106297	.SPACER,RING AXLE SHAFT	4
9	PPFZZ	96906	MS35340-52	.WASHER,LOCK BRACKET MTG	4
9	PPFZZ	96906	MS35338-50	UOC:CQK,U72 .WASHER,LOCK BRACKET MTG UOC:CMQ,CMQ,U73,U74	4
10	PPFZZ	96906	MS51967-26	.NUT,PLAIN,HEXAGON BRACKET MTG	4
11	PAOZZ	95879	G301370	.BREATHER	1
12	PFHZZ	03504	118102	.HOUSING,AXLE	1
13	PAOZZ	12603	11F12P	.PLUG,FILLER AXLE HOUSING	1
14	PAHZZ	03504	112158	.STUD,OUTER END	20
15	PFOZZ	89749	1307337	.PLUG,PIPE,MAGNETIC	1
16	PPFZZ	96906	MS90728-188	.SCREW,CAP,HEXAGON H BRACKET MTG UOC:CMQ,CMQ,U73,U74	4
16	PPFZZ	04285	P67722	.SCREW,CAP,HEXAGON H BRACKET MTG UOC:CQK,U72	4
17	XDFZZ	03677	LT1-317	.BRACKET,AXLE FRONT UOC:CMQ,CMQ,U73,U74	1
17	XBFZZ	04285	C67688X	.BRACKET,AXLE OSCILLATING CYLINDER UOC:CQK,U72	1
END OF FIGURE					